

# INSPIRE Evolution

**Paul Smits, Vanda Nunes de Lima, Francesco  
Pignatelli, Robin Smith**

E&I workshop, Ispra, 29 January 2013



**[www.jrc.ec.europa.eu](http://www.jrc.ec.europa.eu)**

*Serving society  
Stimulating innovation  
Supporting legislation*

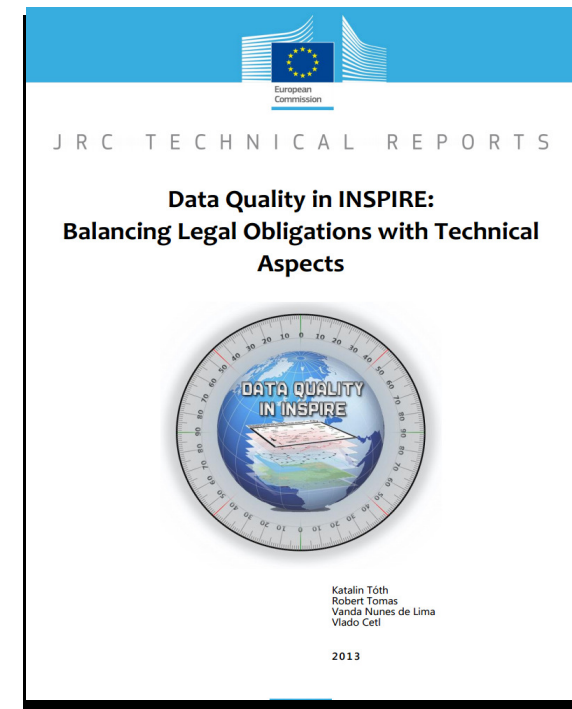
## Why extending INSPIRE?

- Focus on use of INSPIRE
- New environmental thematic requirements
- Use of INSPIRE's multi-purpose infrastructure in non-environmental domains
- Geographic extension

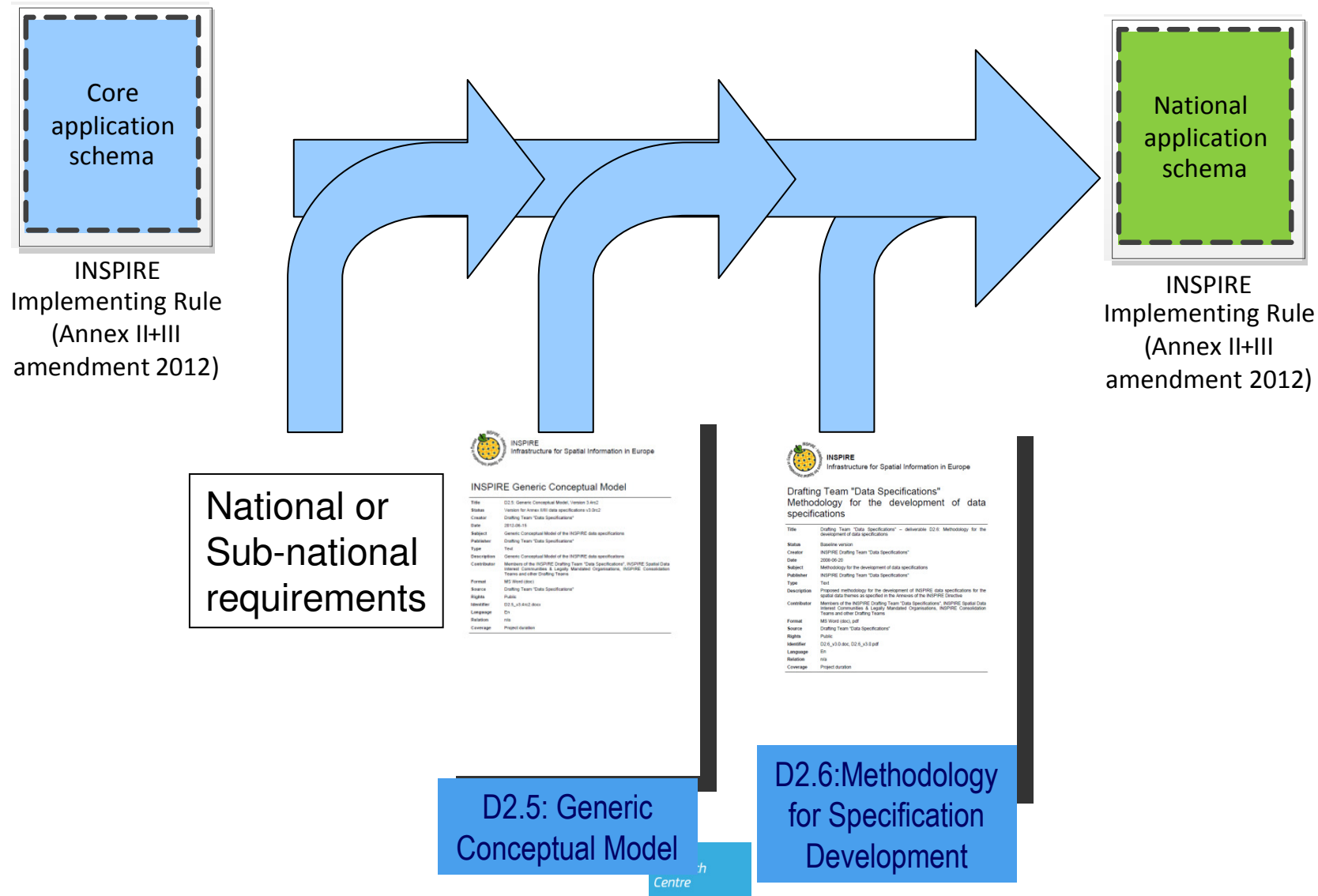
*In close cooperation with the activities of the  
INSPIRE Maintenance and Implementation  
Framework*

# Putting INSPIRE to use

- INSPIRE is regulating data management aspects up to the data access
- Aspects like data quality, which are needed for users, are not covered
- Pan-European data harmonization
- Synergies and alignment with other data sharing policies
  - PSI
  - G8 Charter on Open Data
  - ...



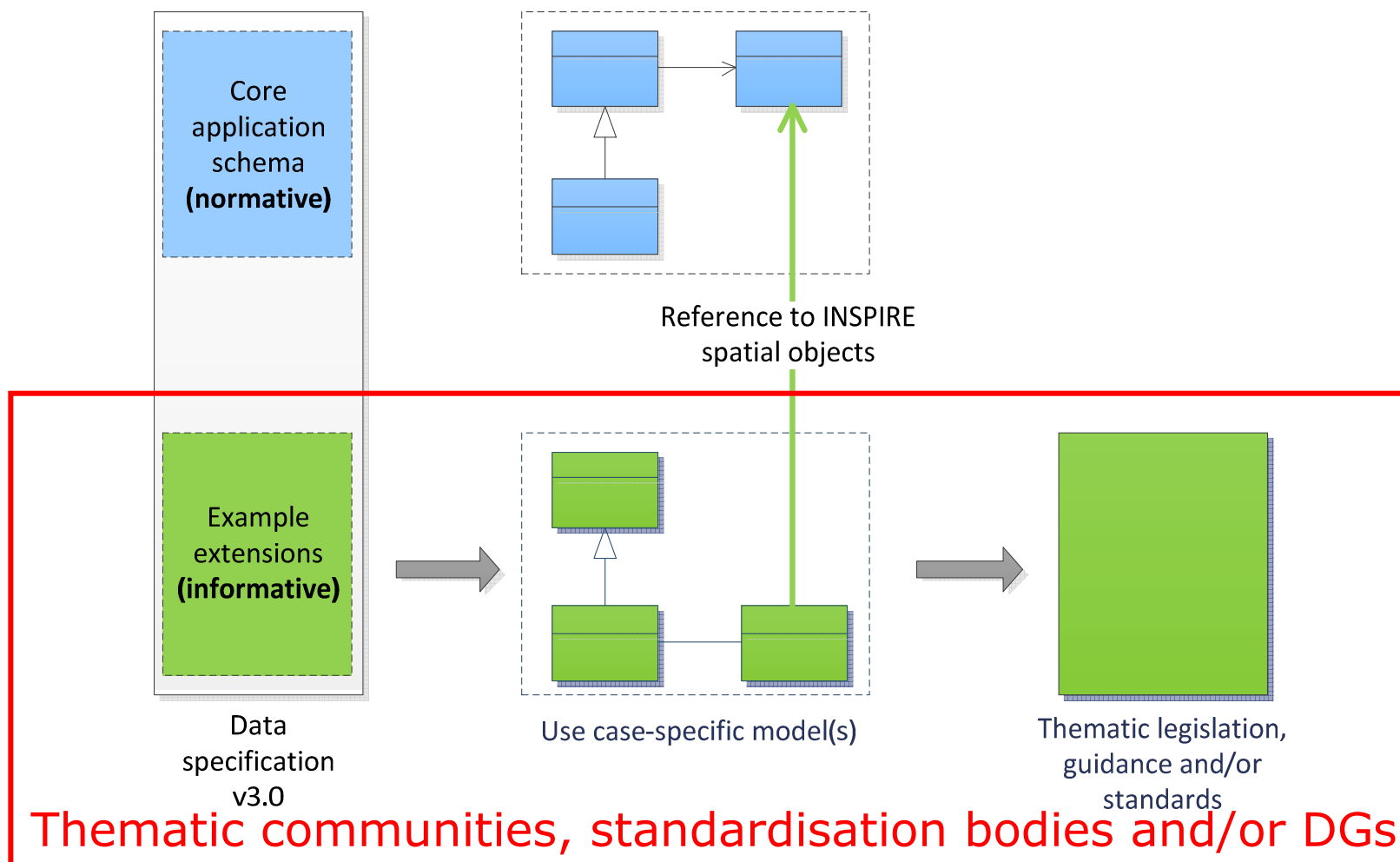
## Use of the infrastructure at national and sub-national levels



## New requirements from **environmental** policies

- **General** requirements around environmental information and reporting
  - 7<sup>th</sup> Environmental Action Programme
  - Shared Environmental Information System (SEIS)
  - Structured Implementation and Information Frameworks
- **Thematic** requirements
  - Water, air, soil and raw materials, etc.

## New thematic requirements from environmental policies





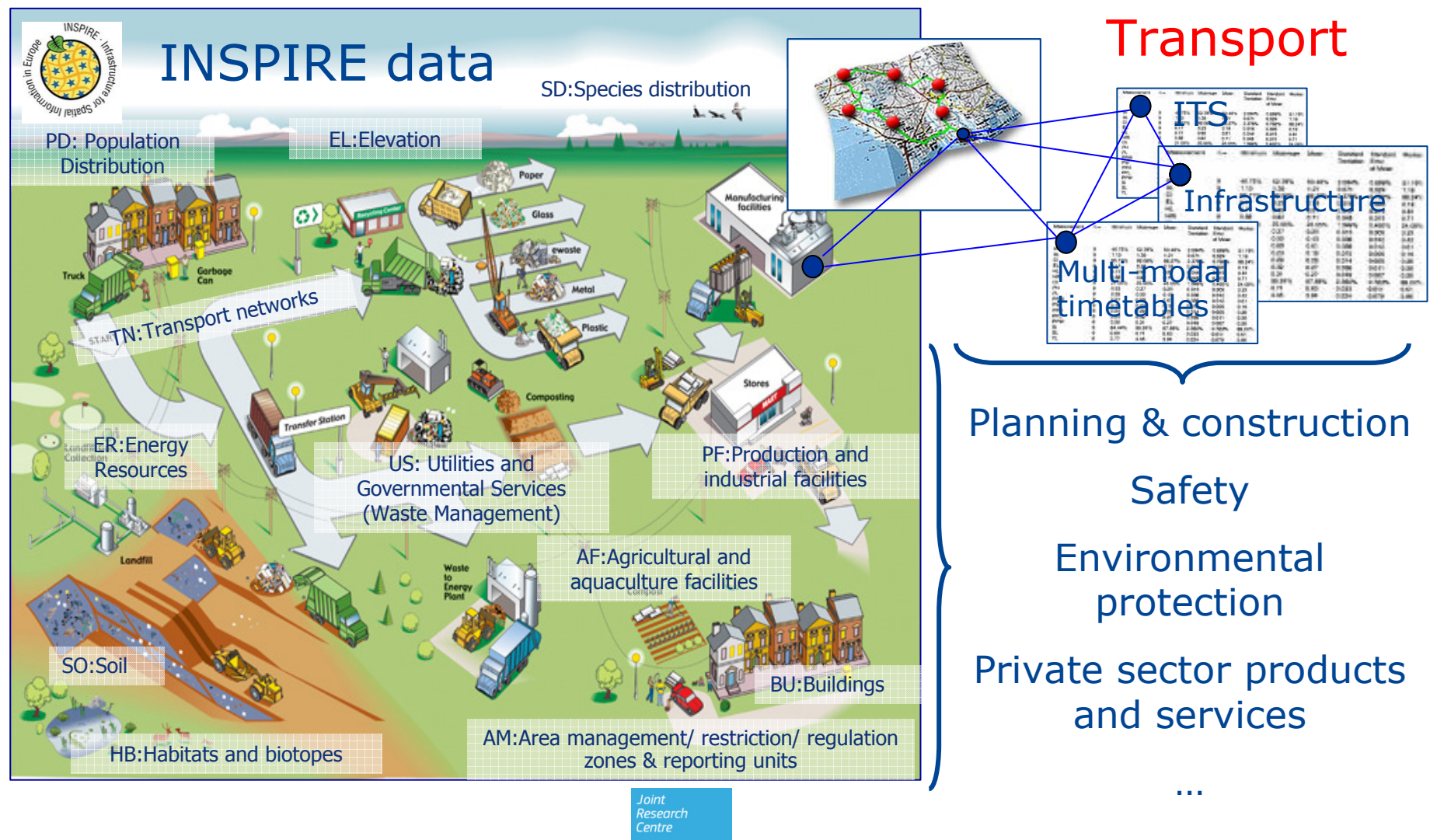
# Planned INSPIRE thematic pilots

Priorities related to Directives that refer to INSPIRE in their legal acts

- Marine Strategy Framework Directive
- Air Quality
- Industrial Emissions Directive
- Noise Directive



# Data interoperability across sectors and borders





## Programme Objectives

### Efficient

... and effective  
electronic  
**cross-border** and  
**cross-sector**  
interaction between  
European  
public  
administrations.

### European public administrations

... share and re-use  
**existing** successful or  
**new**  
Interoperability  
**solutions**,  
**common frameworks**  
and **services**  
and **generic tools**.

### Flexible and interlinked

...IT systems allow  
smooth  
implementation of  
**Community policies**  
and activities.

\* Interoperability solutions for European Public Administrations

## ISA Action 1.17

# ARe<sup>3</sup>NA

A Reusable INSPIRE Reference Platform



**Interoperability**



**Openness**



**Reuse**



**Collaboration**

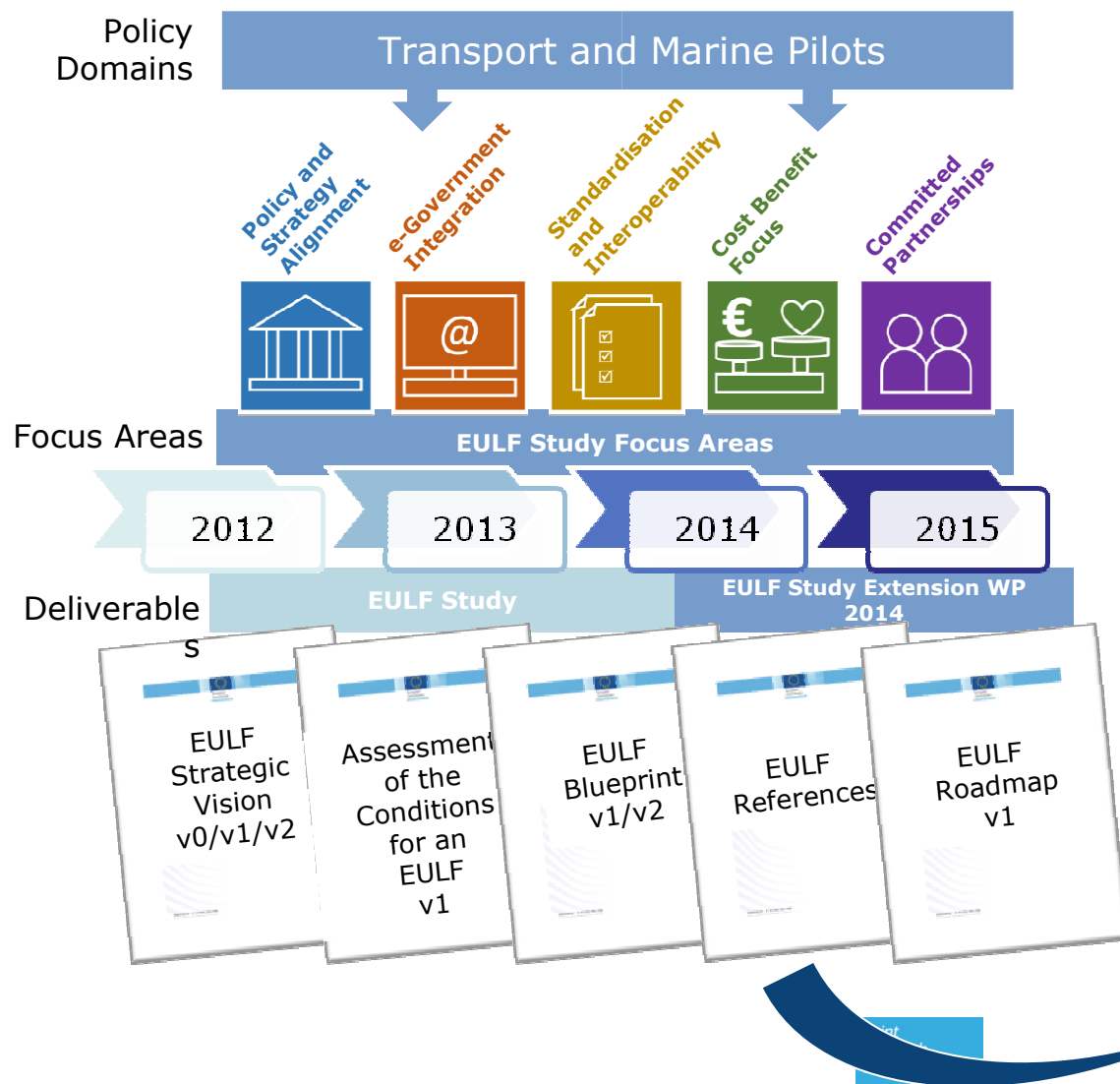
... sharing reusable components for INSPIRE implementation and for interoperability in cross-border/cross-sector contexts.

## Examples of what has been done

- Creation of ARE3NA community on JoinUp to share and organise assets and in INSPIRE Forum
- Populating ARE3NA inventories (+ plans to share outputs via JoinUp)
- Creation and publication of a reusable **Re3gistry** and INSPIRE Registry as an operational service instance (plus user feedback for development)\*
- Designing and developing a prototype open source platform for processing, integrating and visualising volunteered/crowd-sourced data
- Updated INSPIRE metadata guidelines (just published)
- Contributing to other ISA actions to help reuse of components

\*<http://inspire.ec.europa.eu/registry>

## ISA Action 2.13 European Union Location Framework



### Outputs include:

- Vision
- State of play assessment
- Concrete proposals for alignment of strategies and policies, and governance
- Case studies and best practices
- Methodologies for sharing and re-use of spatial data
- Promotion of standards
- Guidelines (e.g., procurement)
- Training and awareness raising
- Pilots

## European Union Location Framework Focus Areas

### Policy and Strategy Alignment:

Consistent EU and Member States policy and legislative approach

### Cost Benefit Focus:

Building compelling impact assessments and business cases

### Committed Partnerships:

Fostering a highly collaborative community to share and adopt best practices

### e-Government Integration:

Location becomes a key enabler in e-Government systems

### Standardisation and Interoperability:

Guidance on standards and technologies for interoperability and re-use



# Policy and Strategy Alignment

- Alignment of policies and legislation at and EU and Member States' level
- Assessing EU and Member States policies, location strategies and e-Government strategies
- Establish a baseline and working with stakeholders to develop proposals that will enable a more consistent and productive approach to location information, based on INSPIRE and on common Member States' needs

**Policy and Strategy Alignment:**

Consistent EU and Member States policy and legislative approach



# e-Government Integration

- Best practice approaches for integrating location information in e-government processes
- Cross-sector and cross-border use cases
- Pilots to develop and test the feasibility of the framework:
  1. Transport and Mobility: the use of location for the Intelligent Transport Systems (ITS) Directive
  2. Marine: the use of location for the Marine Strategy Framework (MSF) Directive

## **e-Government Integration:**

Location becomes a key enabler in e-Government systems





## Standardisation and Interoperability

- Use of geospatial and location-based standards and technologies, enabling interoperability and re-use
- Integration with broader ICT standards and technologies, including semantics, discovery, access and exchange mechanisms
- reviewing the current use of standards and technologies, sharing best practices, developing guidelines and defining approaches with stakeholders to make improvements

### **Standardisation and Interoperability:**

Guidance on standards and technologies for interoperability and re-use



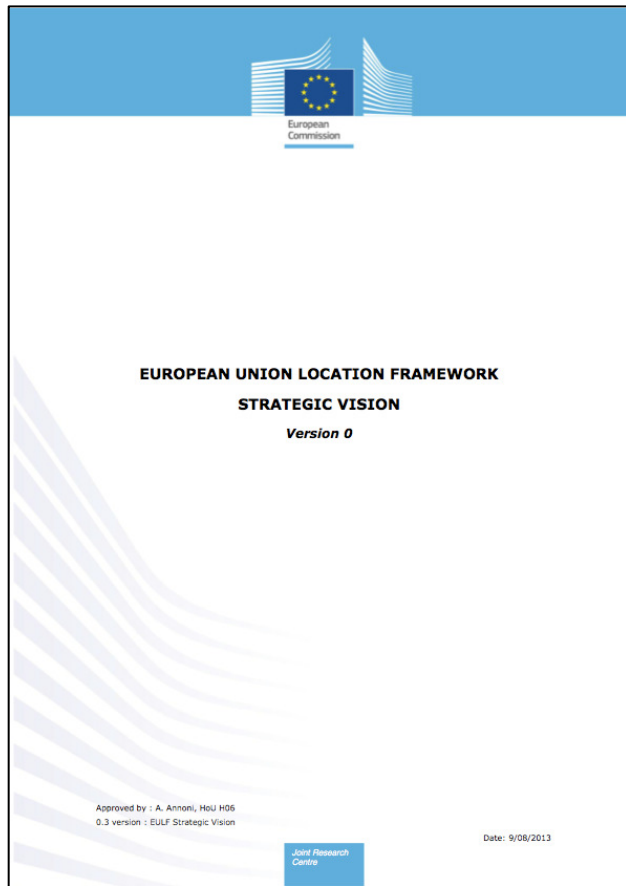
## Cost Benefit Focus

- Promoting knowledge sharing and actions to minimise costs and maximise benefits for government, business and citizens
- Identifying benefits of improved policy alignment, e-Government integration and the use of standards,
- Sharing best practice impact assessments and business cases
- Extending the benefits of existing investments in INSPIRE to other policy areas.

### **Cost Benefit Focus:**

Building compelling  
impact assessments  
and business cases

# EULF Strategic Vision V0



- Sets the strategic direction of what the EULF will achieve in the next few years
- identifies the relevant stakeholders within ISA, INSPIRE, other EU institutions, Member States, Interest Groups and Communities, and associated projects.

[http://ec.europa.eu/isa/actions/documents/isa-2.13\\_eulf-strategic-vision-lite-v0-3\\_final\\_en.pdf](http://ec.europa.eu/isa/actions/documents/isa-2.13_eulf-strategic-vision-lite-v0-3_final_en.pdf)



# Committed Partnerships



## Committed Partnerships:

Fostering a highly collaborative community to share and adopt best practices

# EULF Survey

## Contacts

- INSPIRE National Contact Points
- e-Government National Contact Points



## Investigate

- Use and Integration of location in Public Administration processes and service delivery to citizens and businesses
- Observed benefits of a wider and better use of location information
- Existing actions, initiatives and strategies at the national level to support integration of location in e-Government
- Assessment of barriers to and enablers of the use of location information in e-Government




## Collect

- Best practices
- Examples of documented initiatives and strategies



# EULF Factsheets: Example



**EULF**

The aim of the European Union Location Framework (EULF) is to address the EU-wide, cross-sector interoperability framework for the exchange and sharing of location data and services.

**EULF good practices**

Applications in different domains demonstrate the benefits of a consistent use of location information and services.

A 'generic GIS for e-government' in Flanders

*Open-source GIS environment for delivering online services to citizens and businesses*

**Country:**

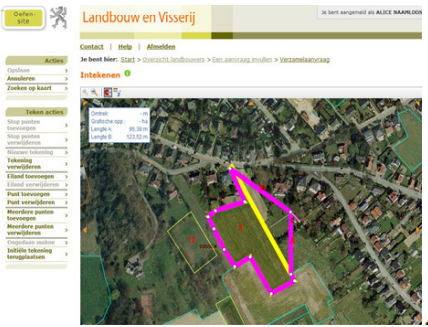
- Belgium

**Policy domains:**

- Agriculture
- Spatial planning

**Process owners:**

- Flemish E-government unit
- Agency for Agriculture and Fisheries
- Flemish Land Agency
- Department of Spatial Planning, Housing Policy and Immovable Heritage



*The Agriculture e-portal for farmers*

In 2006 the Flemish government started with the development of a 'generic GIS for e-government'

- Best practices in the **integration** of location in e-Government
- **Real cases**
- **Country strategies** to achieve the integration

## What we'd like from you

- Give us your ideas today
- Feedback on the EULF Strategic Vision v0
- Contact us to:
  - share best practices
  - participate in our future workshops and consultations
- Help promote the EULF in future



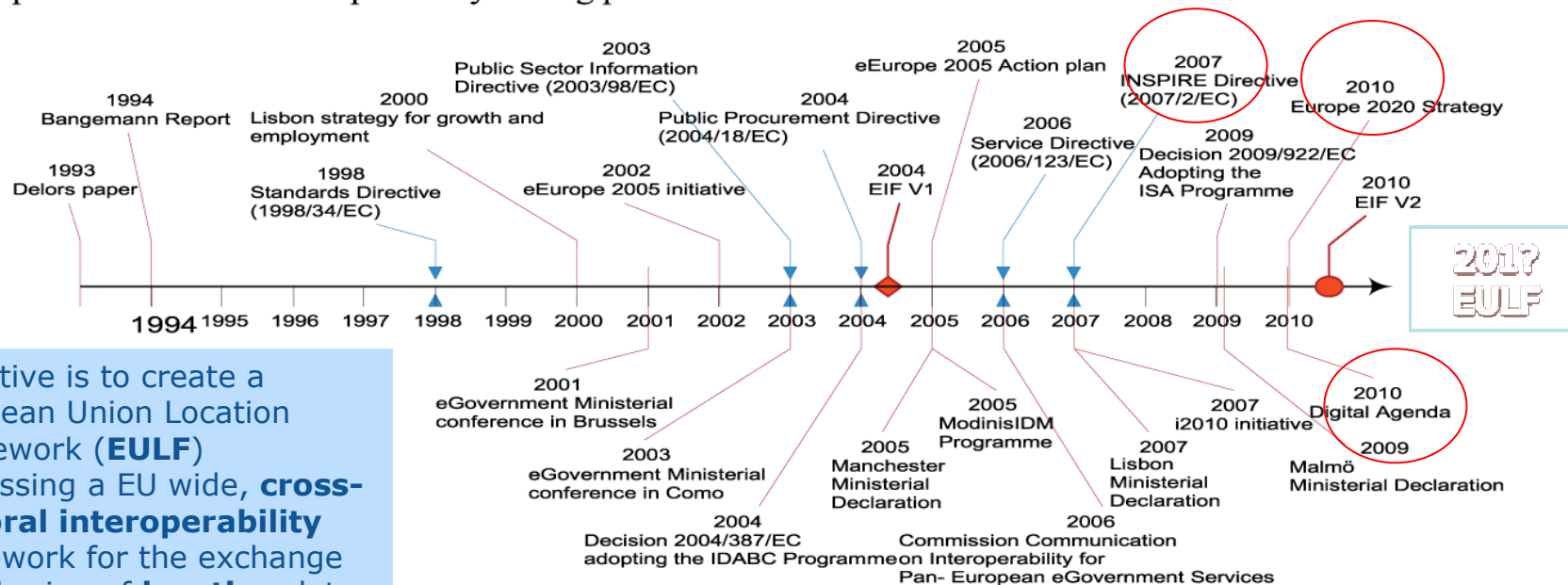
## Digital Agenda for Europe

*a flagship initiative of the  
Europe 2020 Strategy*

As recognized in the recent communication  
"Towards interoperability for European public  
services" COM(2010) 744 Action on  
**interoperability is essential to maximise  
the social and economic potential of ICT**

### EUROPEAN INTEROPERABILITY FRAMEWORK FOR EUROPEAN PUBLIC SERVICES

The EU initiatives shown below illustrate, from a historical perspective, the support provided at political level for interoperability among public administrations.



Objective is to create a European Union Location Framework (**EULF**) addressing a EU wide, **cross-sectoral interoperability** framework for the exchange and sharing of **location** data and services

Timeline of EU initiatives concerning interoperability



# Geographic extension

- Enlargement and Integration activities
- European Union Strategy for the Danube Region
- United Nations Global Geographic Information Management Europe

**Thank you for your attention!**



**Welcome to the INSPIRE Conference 2014!**  
**Aalborg, Denmark, 16-20 June 2014**

**Inspire-info@jrc.ec.europa.eu**

Joint  
Research  
Centre

**<http://inspire.ec.europa.eu>**